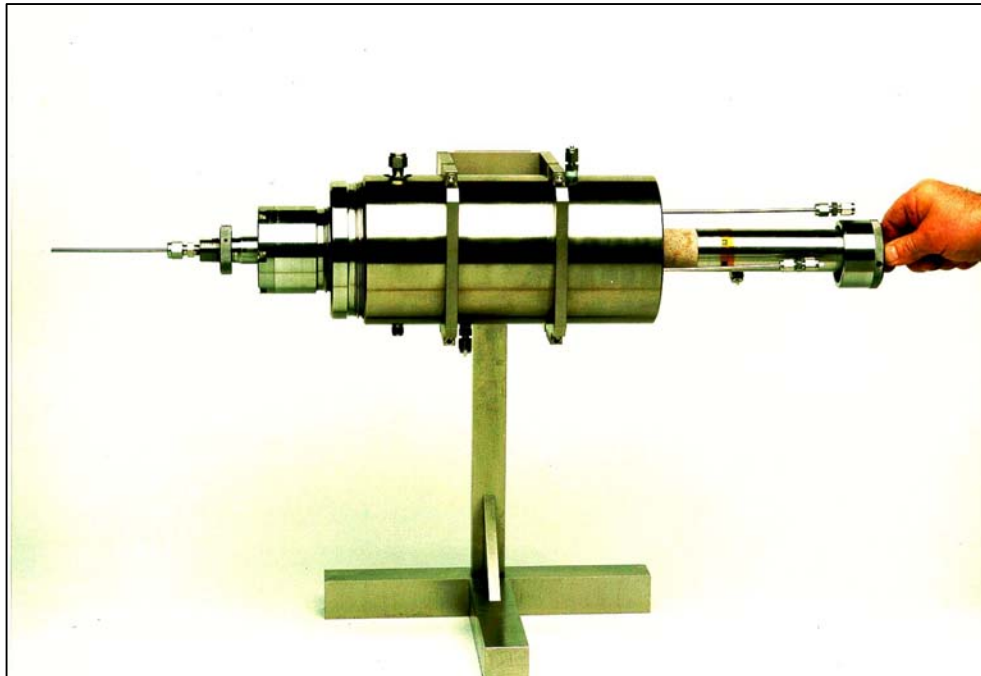
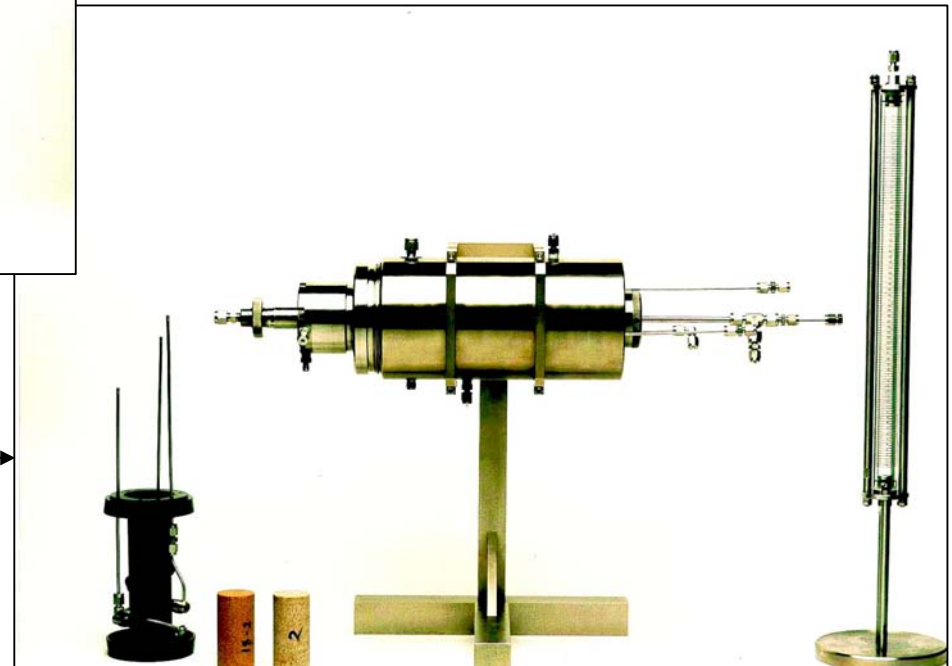


MODULAR CONSTRUCTION VARIABLE FACE SUPPORT MUD FILTRATE TESTING CORE HOLDER



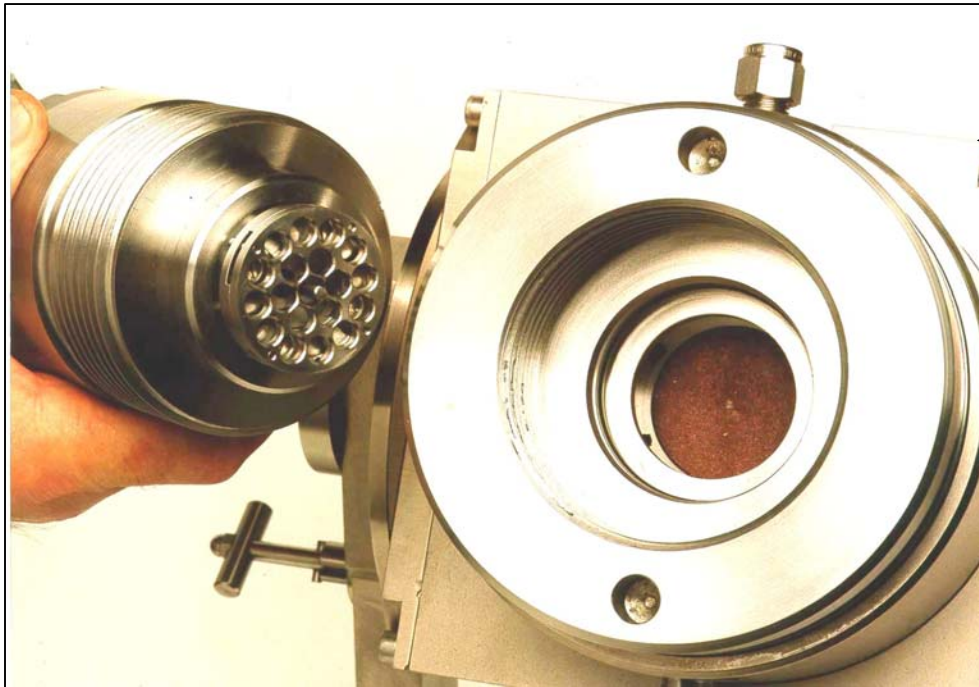
Insertion of test core at down-stream end of Balanced Piston Triaxial Core Flow Cell

Fully assembled test cell for horizontal flow test -also showing spare core sleeve populated with three pressure ports and a graduated effluent collection burette (not included in the offer)



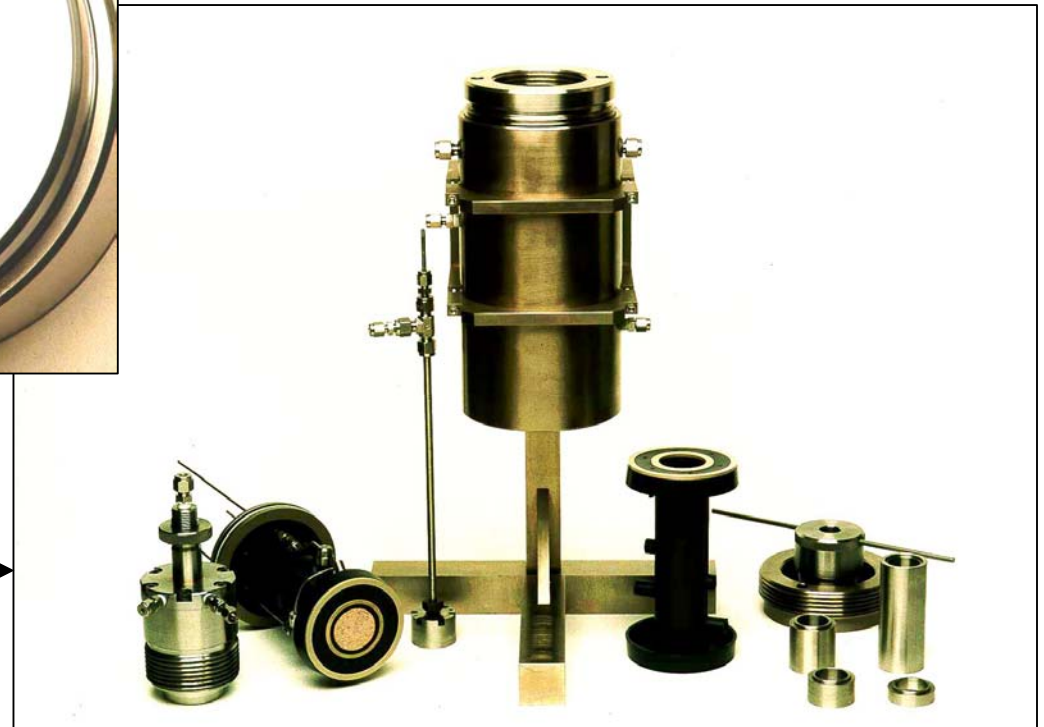
MODULAR CONSTRUCTION VARIABLE FACE SUPPORT MUD FILTRATE TESTING CORE HOLDER

ErgoTech Ltd
Unit 3 Cae Ffwyt Business Park
Glan Conwy
Conwy LL28 5SP U K
Tel. (44) (0)1492 592684
Fax. (44) (0)1492 592685
E-mail: sales@ergotech.co.uk
Web Site: www.ergotech.co.uk



Balanced Piston Module unscrewed to exposed inlet face of test core for mechanical and visual examination with stereo microscope and probes

Cell mounted on purpose designed stand for easy assembly and for sample loading/unloading



MODULAR CONSTRUCTION VARIABLE FACE SUPPORT MUD FILTRATE TESTING CORE HOLDER

Design Principles

The ErgoTech Modular construction variable face support mud filtrate testing core holder has an advanced design with three separate modules. The coreholder's essential components and assembly method are fully illustrated in the operating manual.

Key design features are:-

- The Modular design The cell body, mud chamber module and balanced piston module which allows direct inspection of the "mudcake" after taking certain confining pressure limitations to avoid the front face of the sample sample spalling off or failing in tension.
- The Ø110mm bore cell with its 'O' ring adapter rings allows use of a small very high integrity triaxial jacket in Fluoroelastomer 'B'.
- The cell is mounted in a custom built swivel unit with 90° indexing (spring loaded latch stop) stand allowing easy assembly, jacket loading and sample loading.
- The sample jacket with its 3 push in sites - 2 large 90° to the sample and one angled 5mm away from the core face is intrinsic to the functioning of the core holder. The push-in pressure ports are removable and replaceable.
- The anti extrusion ring seals the front of the core sample whilst allowing the Fluoroelastomer jacket to function during long term exposure to full pressure and temperature.
- The piston allows mounting of variable face support configurations
- The core face axially mounted core has its end face extending only 0.3mm into the mud chamber which give total confinement of the rubber part of the anti extrusion ring

The axial position of the front face can be verified by simple extension rod - dial gauge set up which can be simplified into a combined position measurement and flow

Technical Specifications:

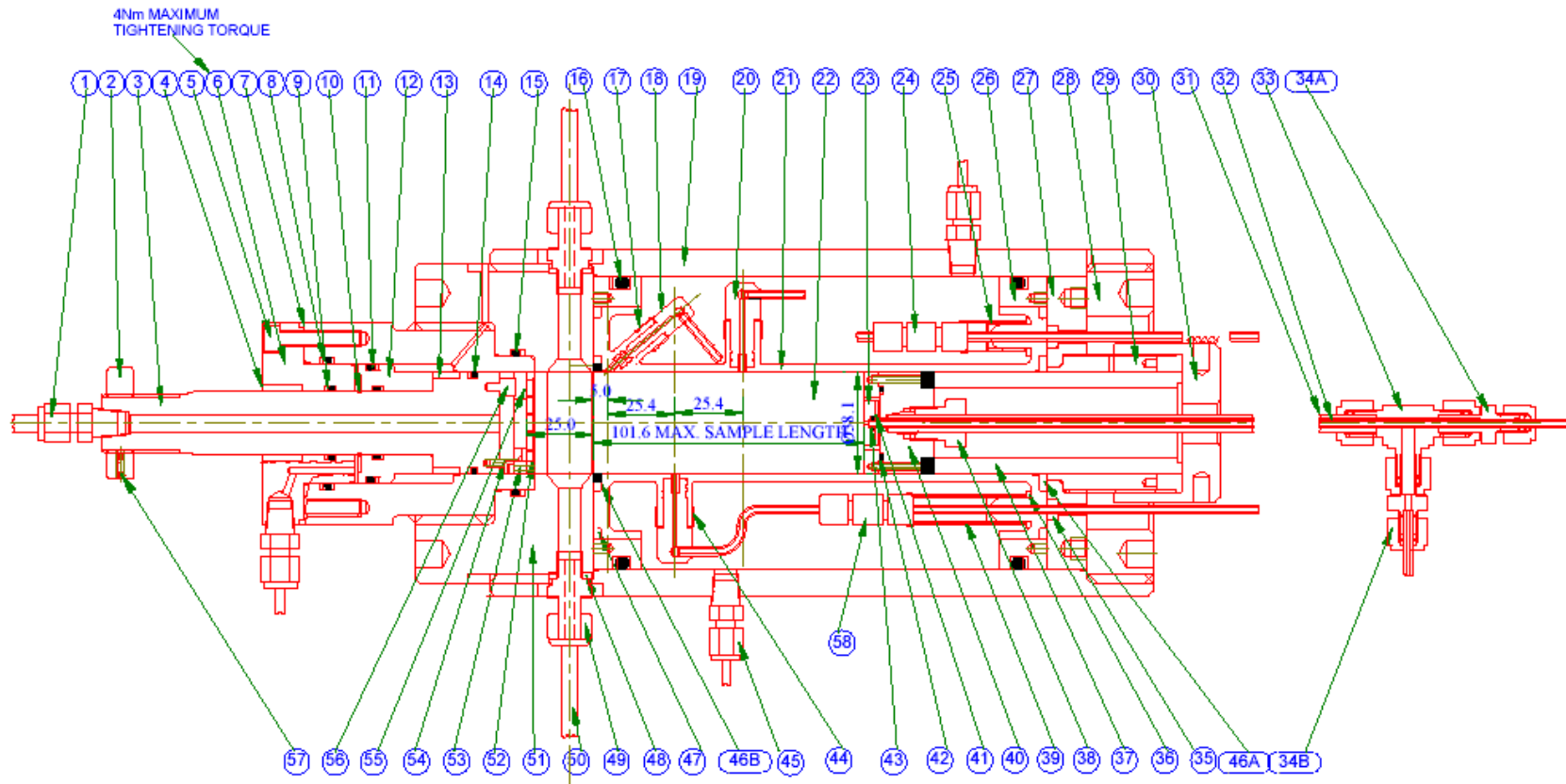
- Maximum allowable working pressure:
34.5MPa (5,000PSIG)
- Maximum allowable working temperature:
150°C (302°F)
- Sample size: Ø38.1mm (Ø1.5") with a
length accommodation range of 25.4mm
(1") to 101.6mm (4")



MODULAR CONSTRUCTION VARIABLE FACE SUPPORT MUD FILTRATE TESTING CORE HOLDER

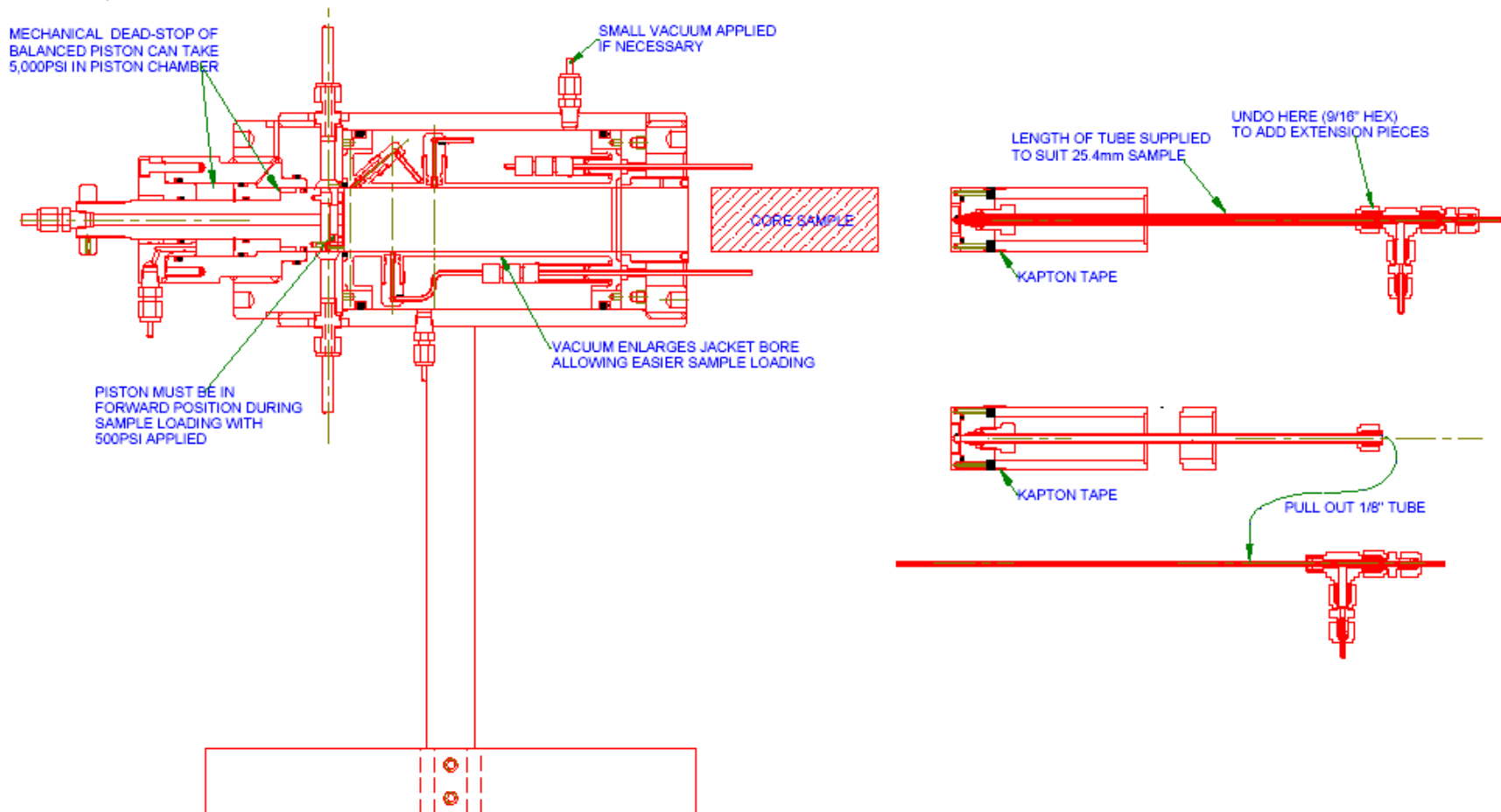
WORKING PRESSURE: 5,000PSIG / 34.5MPa
 WORKING TEMP: 150°C
 ESTIMATED WEIGHT: 20kg

ASSEMBLY DRAWING



MODULAR CONSTRUCTION VARIABLE FACE SUPPORT MUD FILTRATE TESTING CORE HOLDER

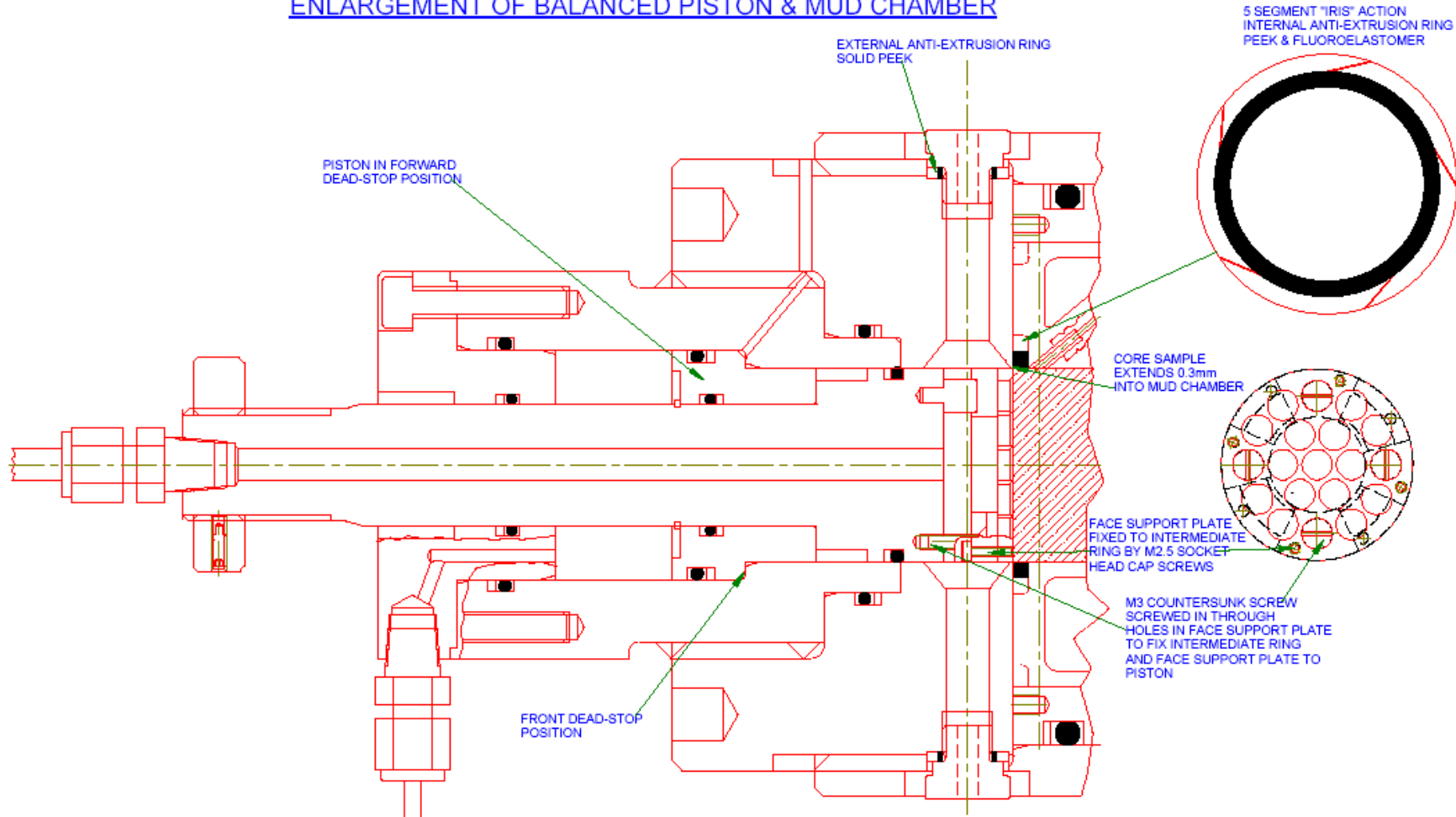
SAMPLE LOADING - ASSEMBLY STEPS 5



MODULAR CONSTRUCTION VARIABLE FACE SUPPORT MUD FILTRATE TESTING CORE HOLDER

ErgoTech Ltd
 Unit 3 Cae Ffwyt Business Park
 Glan Conwy
 Conwy LL28 5SP U K
 Tel. (44) (0)1492 592684
 Fax. (44) (0)1492 592685
 E-mail: sales@ergotech.co.uk
 Web Site: www.ergotech.co.uk

ENLARGEMENT OF BALANCED PISTON & MUD CHAMBER



MODULAR CONSTRUCTION VARIABLE FACE SUPPORT MUD FILTRATE TESTING CORE HOLDER

ErgoTech Ltd
 Unit 3 Cae Ffwrt Business Park
 Glan Conwy
 Conwy LL28 5SP U K
 Tel. (44) (0)1492 592684
 Fax. (44) (0)1492 592685
 E-mail: sales@ergotech.co.uk
 Web Site: www.ergotech.co.uk

SETUP USED DURING TEST OF AXIAL POSITIONAL STABILITY OF CORE SAMPLE WITH BALANCED PISTON RETRACTED

